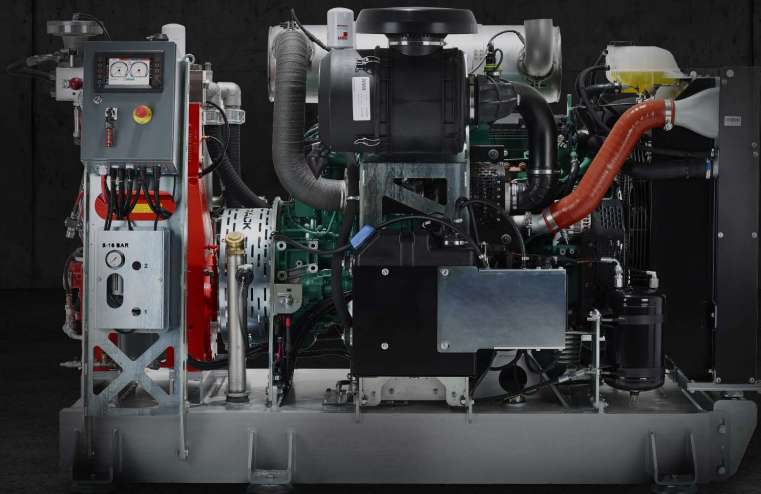
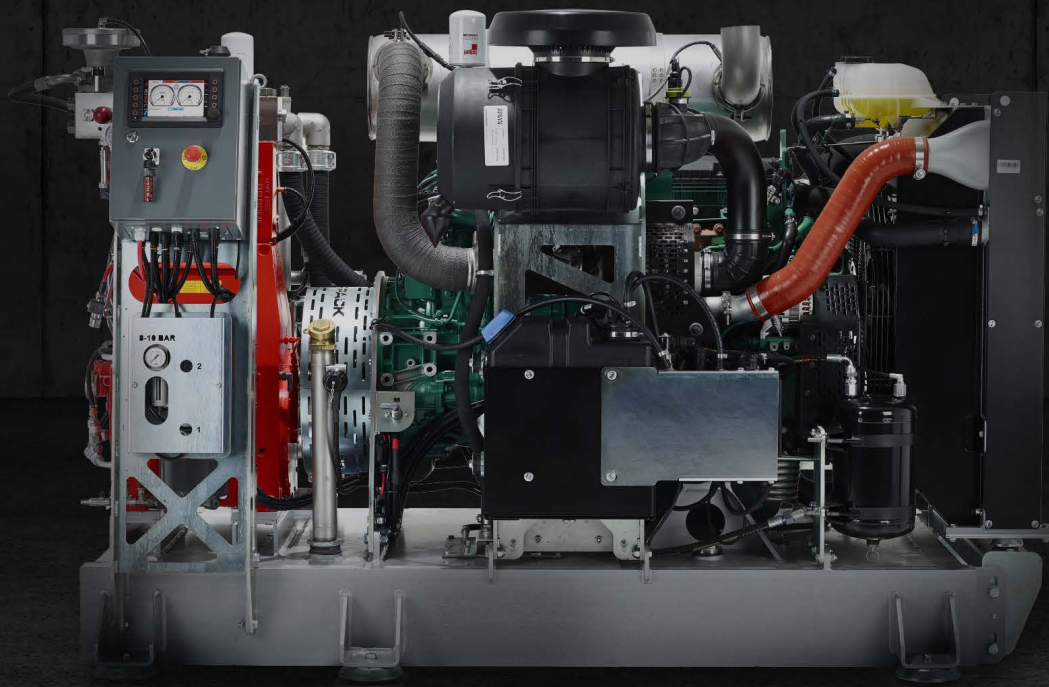


AQUA SKID 270
High-pressure pump system

Mobilize for success



AQUAJET



AQUA SKID 270

High-pressure pump system

Skid-mounted high-pressure pump system

A skid mounted Power Pack is a high-pressure unit, specially designed for installation in your truck, trailer or local container. It has the same performance and basic functions as our container Power Packs. The skid mounted Power Pack can also be used in areas where enclosing isn't necessary or possible. That's convenient and accessible, regardless of your needs.

Our standard program of high-pressure units satisfies the market needs, and range from smaller skid-mounted units up to heavy duty powerful contracting machines. You can use them for cleaning and paint removal, scarifying and roughening of concrete surfaces, heavy industrial cleaning, concrete demolition and much more.

Born versatile

Aquajet's skid mounted Power Pack 270 has a powerful diesel engine and high-pressure pump. To operate a Skid mounted Power Pack you only need fuel and water supply. No external electric supply is required to start the operation.

Features and benefits

REVO control system

Our REVO Control system features all the functions you need to control and monitor the Aqua Skid. The system is safe and user friendly. Parameters are easily set on the graphic color display with iconic multi-language operator's instructions.

Engine, pump and frame

We use Volvo diesel engines for all skid mounted Power Packs. Engines from other manufacturers are optional and can be installed with specific requirements. The base frame is installed on vibration isolators. All pipes and fittings surrounding the engine area are made from stainless steel and none-corrosive material.

Remote control system

All our Power Packs feature a remote control system with pressure on/off switch and emergency stop. When the remote control is switched to the off position the system will depressurize the pump and high pressure hose and reduce the engine rpm to low idle.

Stainless steel booster

A stainless steel booster pump is mounted between the water tank and the high-pressure pump to provide adequate inlet pressure.

Water-filter, water tank centrifuge and air bleeding

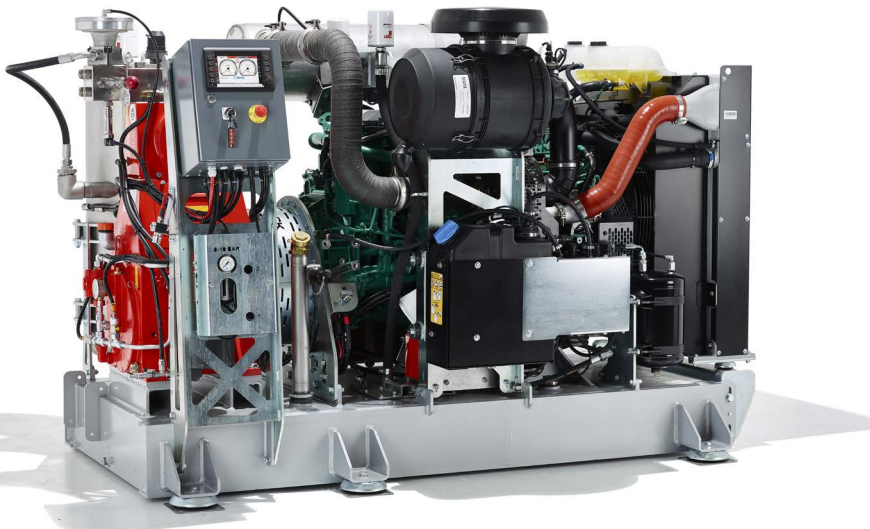
A bag type water filter prevents dirt particles from entering the system and pump. Specially designed water tank that centrifuges away air bubbles from the water, with level sensing and temperature control. Automatic air bleeding (without bleeding valves).

Reliable and easy service

Clean and open design around the engine and pump provides unrivalled ease of access for both daily maintenance jobs such as checking oil levels, and periodic service jobs such as oil and filter changes. This means less downtime with maintenance work and more time for actual work.

Optional equipment

- Special design water tank that centrifuges away air bubbles from the water, with level sensing and temperature control.
- Radio remote control that can be docked with the robot's remote control.
- Spark arrestor.
- Shut-down valve (gas alert valve).





Facts

Pressure*	1200 bar (17404 psi)
Flow*	87 l/min (18,2 US Gal/min)
Pressure* (UHP**)	2800 bar (40610 psi)
Flow* (UHP**)	40 l/min (9,0 US Gal/min)
Tank volume	520 l (137 US Gal)
Approx. weight	2300 kg (5 070 lb)
Total length	2524 mm (99")
Total width	1814 mm (71")
Total height	1668 mm (66")
Frame length (L1)	2200 mm (86")
Total length (L2)	2524 mm (99")
Frame width (W1)	1100 mm (43,3")
Mounting width (W2)	1294 mm (50,9")
Total width (W3)	1814 mm (71")
Height (H1)	1627 mm (64")
Height (H2)	1668 mm (66")

* Other pressures and flows are available upon request.

** Ultra High Pressure

